

42/179

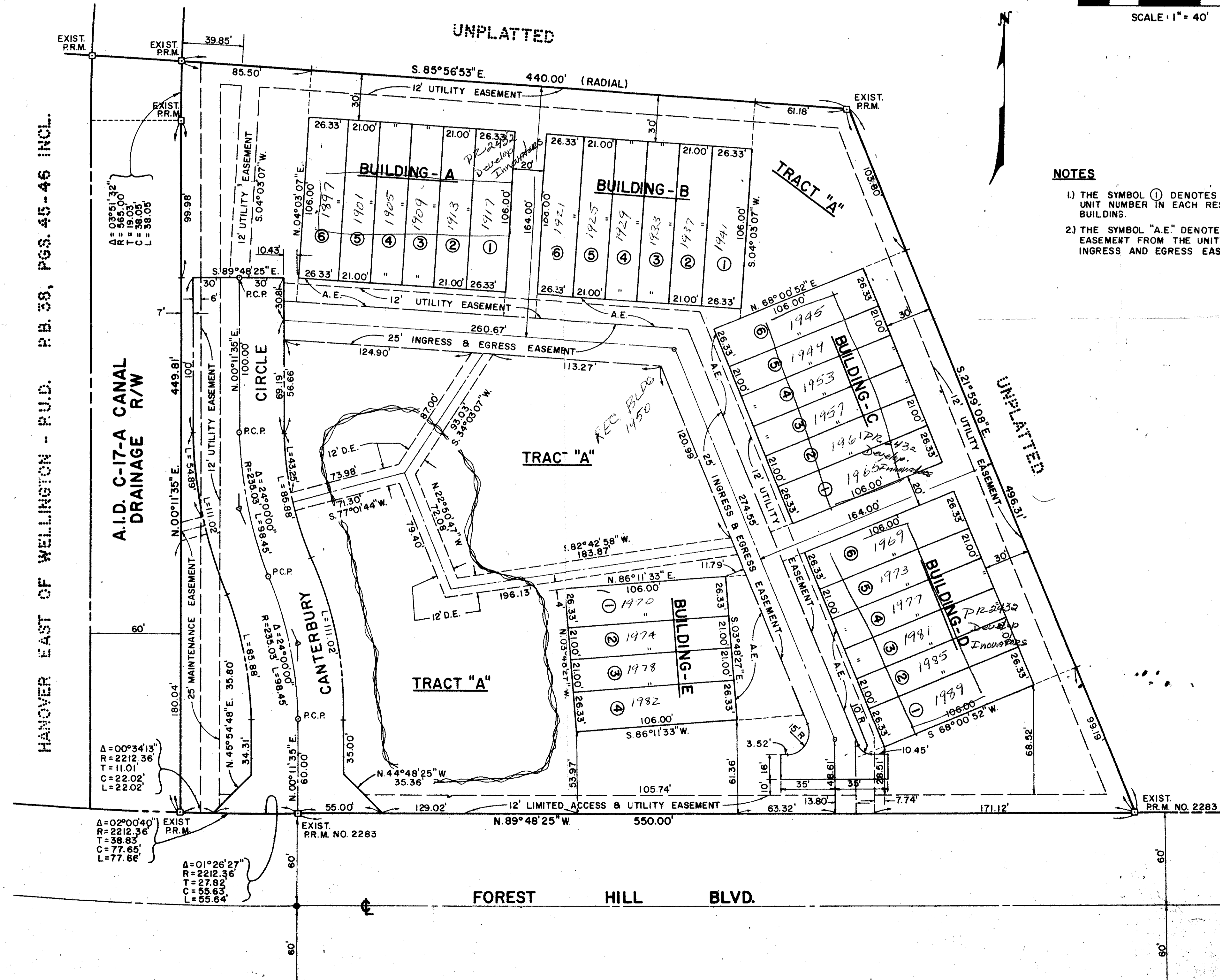
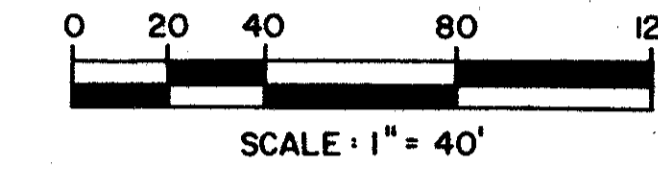
COVENTRY GREEN AT WELLINGTON

P.U.D.
BEING A REPLAT OF PARCEL "C"
SOUTH SHORE 2A OF WELLINGTON, P.B. 31, PGS. 116 TO 119 INCL.
IN SECTION II, TWP. 44S., RGE. 41E.
PALM BEACH COUNTY, FLORIDA

JULY, 1981
SHEET 2 OF 2 SHEETS

179

STATE OF FLORIDA)
COUNTY OF PALM BEACH)
This Plat was filed for record
at _____ M., this _____ day of
_____, 19____, and
duly recorded in Plat Book No.
_____ on Page No. _____
JOHN B. DUNKLE, CLERK OF
CIRCUIT COURT
BY: _____ D.C.



NOTES

- 1) THE SYMBOL ① DENOTES THE UNIT NUMBER IN EACH RESPECTIVE BUILDING.
- 2) THE SYMBOL "A.E." DENOTES ACCESS EASEMENT FROM THE UNITS TO THE INGRESS AND EGRESS EASEMENT.

HANOVER EAST OF WELLINGTON - P.U.D. P.B. 38, PGS. 45-46 INCL.

A.I.D. C-17-A CANAL DRAINAGE R/W

$\Delta = 02^{\circ}00'40''$
 $R = 2212.36$
 $T = 11.01$
 $C = 22.02$
 $L = 22.02$

$\Delta = 01^{\circ}26'27''$
 $R = 2212.36$
 $T = 22.02$
 $C = 55.64$
 $L = 55.64$

0332-343

KELLEY ENGINEERING ASSOC. INC.
CONSULTING ENGINEERS AND SURVEYORS
WEST PALM BEACH, FLORIDA

Coventry Green At
Well. / 42/179
11/4/41